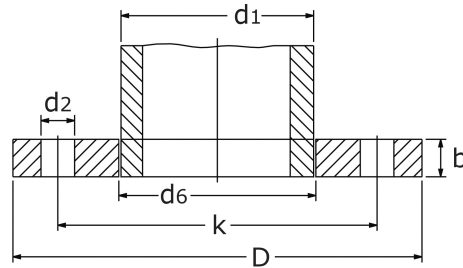


plate flange PN 25  
EN 1092-1 Typ 01/A

short name: [GF25\\*](#)



## technical product sheet

DN	d1	D	k	d2	Anz	RG	d6	b	kg	Art.-Nr.
200	219,1	360	310	26	12	M24	221,5	32	14,520	GF-219-025
250	273,0	425	370	30	12	M27	276,5	35	20,100	GF-273-025
300	323,9	485	430	30	16	M27	327,5	38	0,000	GF-323-025
350	355,6	555	490	33	16	M30	359,5	42	0,000	GF-355-025
400	406,4	620	550	36	16	M33	411,0	48	0,000	GF-406-025
450	457,2	670	600	36	20	M33	462,0	54	0,000	GF-457-025
500	508,0	730	660	36	20	M33	513,5	58	87,000	GF-508-025
600	610,0	845	770	39	20	M36	616,5	68	127,000	GF-610-025

available material: ask

Flanges > plate flanges > DIN / EN > PN 25

## Smooth flange PN 25 according to EN 1092-1 Typ 01

(Dimensions for DN < 200 see PN 40)

Smooth seal surface - shape A

Machining	Ra ( $\mu\text{m}$ )	Rz ( $\mu\text{m}$ )
rotated	min. 3,25 / max. 12,5	min. 12,5/ max. 50

## Flange connection according to DIN 601

(fits to a pair of flanges)

Consisting of hex-head srew (number of corresponding flange drill holes)

4-6 Mu DIN 601 and a gasket EN 1514 DIN 2690 (for example Klingersil C-4400)

DN	Number	Size
200	12	M 20 x 70
250	12	M 24 x 75
300	12	M 24 x 80
350	16	M 24 x 90
400	16	M 27 x 100
500	20	M 30 x 110
600	20	M 33 x 110