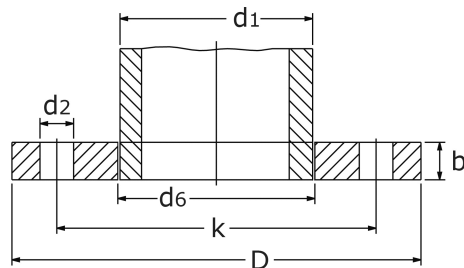


plate flange PN 10

short name: [GF.10\\*](#)



## technical product sheet

DN	d1	Typ	D	d6	b	k	d2	Anz	RG	Reihe	Art.-Nr.
10	17,2	DIN 2576/B	90	17,7	14	60	14	4	M12	ISO	GF-017-000
15	18,0	DIN 2576/B	95	19,0	14	65	14	4	M12	Metric	GF-018-000
15	20,0	DIN 2576/B	95	21,0	14	65	14	4	M12	DIN	GF-020-000
15	21,3	DIN 2576/B	95	22,0	14	65	14	4	M12	ISO	GF-021-000
20	22,0	DIN 2576/B	105	23,0	16	75	14	4	M12	11852	GF-022-000
20	25,0	DIN 2576/B	105	26,0	16	75	14	4	M12	DIN	GF-025-000
20	26,9	DIN 2576/B	105	27,6	16	75	14	4	M12	ISO	GF-026-000
25	28,0	DIN 2576/B	115	29,0	16	85	14	4	M12	Metric	GF-028-000
25	29,0	DIN 2576/B	115	30,0	16	85	14	4	M12	11852	GF-029-000
25	30,0	DIN 2576/B	115	31,0	16	85	14	4	M12	DIN	GF-030-000
25	33,7	DIN 2576/B	115	34,4	16	85	14	4	M12	ISO	GF-033-000
32	34,0	DIN 2576/B	140	35,0	16	100	18	4	M16	11852	GF-034-000
32	35,0	DIN 2576/B	140	36,0	16	100	18	4	M16	Metric	GF-035-000
32	38,0	DIN 2576/B	140	39,0	16	100	18	4	M16	DIN	GF-038-000
32	42,4	DIN 2576/B	140	43,1	16	100	18	4	M16	ISO	GF-042-000
40	40,0	DIN 2576/B	150	41,0	16	110	18	4	M16	11852	GF-040-000
40	44,5	DIN 2576/B	150	45,5	16	110	18	4	M16	DIN	GF-044-000
40	48,3	DIN 2576/B	150	49,0	16	110	18	4	M16	ISO	GF-048-000
50	52,0	DIN 2576/B	165	53,1	18	125	18	4	M16	11852	GF-052-000
50	53,0	DIN 2576/B	165	54,1	18	125	18	4	M16	11852	GF-053-000
50	54,0	DIN 2576/B	165	55,1	18	125	18	4	M16	Metric	GF-054-000
50	57,0	DIN 2576/B	165	58,1	18	125	18	4	M16	DIN	GF-057-000
50	60,3	DIN 2576/B	165	61,1	18	125	18	4	M16	ISO	GF-060-000
65	70,0	DIN 2576/B	185	71,0	18	145	18	4	M16	11852	GF-070-000
65	76,1	DIN 2576/B	185	77,1	18	145	18	4	M16	ISO	GF-076-000
80	84,0	DIN/ EN (PN	200	85,4	20	160	18	8	M16	Metric	GF-084-000
80	85,0	DIN 2576/B	200	86,4	20	160	18	8	M16	11852	GF-085-000
80	88,9	DIN/ EN (PN	200	90,3	20	160	18	8	M16	ISO	GF-088-000
100	101,6	DIN 2576/B	220	103,2	20	180	18	8	M16	div.	GF-101-000
100	104,0	DIN 2576/B	220	105,6	20	180	18	8	M16	Metric	GF-104-000
100	108,0	DIN 2576/B	220	109,6	20	180	18	8	M16	DIN	GF-108-000
100	114,3	DIN 2576/B	220	115,9	20	180	18	8	M16	ISO	GF-114-000
125	129,0	DIN 2576/B	250	130,8	22	210	18	8	M16	Metric	GF-129-000
125	133,0	DIN 2576/B	250	134,8	22	210	18	8	M16	DIN	GF-133-000
125	139,7	DIN/ EN (PN	250	141,6	22	210	18	8	M16	ISO	GF-139-000
150	154,0	DIN 2576/B	285	156,1	22	240	22	8	M20	Metric	GF-154-000
150	156,0	DIN 2576/B	285	158,1	22	240	22	8	M20	Metric	GF-156-000

created 12.05.2018 01:16

1/5

DN	d1	Typ	D	d6	b	k	d2	Anz	RG	Reihe	Art.-Nr.
150	159,0	DIN 2576/B	285	161,1	22	240	22	8	M20	DIN	GF-159-000
150	168,3	DIN 2576/B	285	170,5	22	240	22	8	M20	ISO	GF-168-000
200	204,0	DIN/ EN	340	206,7	24	295	22	8	M20	Metric	GF-204-000
200	206,0	DIN 2576/B	340	208,7	24	295	22	8	M20	Metric	GF-206-000
200	219,1	DIN/ EN	340	221,8	24	295	22	8	M20	ISO	GF-219-000
250	254,0	DIN/ EN	395	257,5	26	350	22	12	M20	Metric	GF-254-000
250	256,0	DIN 2576/B	395	259,2	26	350	22	12	M20	Metric	GF-256-000
250	267,0	DIN 2576/B	395	270,2	26	350	22	12	M20	DIN	GF-267-000
250	273,0	DIN/ EN	395	276,2	26	350	22	12	M20	ISO	GF-273-000
300	304,0	DIN/ EN	445	307,7	26	400	22	12	M20	Metric	GF-304-000
300	306,0	DIN 2576/B	445	309,7	26	400	22	12	M20	Metric	GF-306-000
300	306,0	EN 1092-1/A	460	309,6	32	410	26	12	M24	Metric	GF-306-E00
300	323,9	DIN/ EN	445	327,6	26	400	22	12	M20	ISO	GF-323-000
350	355,6	DIN 2576/B	505	359,7	28	460	22	16	M20	ISO	GF-355-000
350	355,6	EN 1092-1/A	505	359,7	30	460	22	16	M20	ISO	GF-355-E00
350	368,0	DIN 2576/B	505	372,2	28	460	22	16	M20	DIN	GF-368-000
400	406,4	DIN/ EN	565	411,0	32	515	26	16	M24	ISO	GF-406-000
450	457,2	DIN 2576/B	615	462,3	38	565	26	20	M24	ISO	GF-457-000
450	457,2	EN 1092-1/A	615	462,0	36	565	26	20	M24	ISO	GF-457-E00
500	508,0	DIN/ EN	670	513,5	38	620	26	20	M24	ISO	GF-508-000
600	610,0	EN 1092-1/A	780	616,5	42	725	30	20	M27	ISO	GF-610-000
700	711,2	EN 1092-1/A	895		50	840	30	24	M27	ISO	GF-711-000
800	813,0	EN 1092-1/A	1015		56	950	33	24	M30	ISO	GF-813-000
900	914,4	EN 1092-1/A	1115		62	1050	33	28	M30	ISO	GF-914-000
1000	1016,0	EN 1092-1/A	1230		70	1160	36	28	M33	ISO	GF-A16-000
1200	1220,0	EN 1092-1/A	1455		83	1380	39	32	M36	ISO	GF-B00-000

available material: 1.4541, 1.4571, 304L, 316L

Flanges > plate flanges > DIN / EN > PN 10



## Smooth Flange for welding - PN 10

with smooth gasket shape

### Comparison DIN - EN

Standard

**DIN (old)**

DIN 2576

**EN (new)**

EN 1092-1 Type 01

In contrast to the DIN standard, EN-1092-1 only specifies the pipe connection dimensions of the ISO series. It is therefore sufficient to stamp the nominal diameter (DN) for marking purposes.

Dimension range

**DIN 2576**

DN 10 to 500

**EN 1092-1**

DN 200 to 1200

(Dimensions for DN < 200 see PN 16)

### Seal surface

Designation of the gasket shape

**DIN 2526**

Form B

**EN 1092-1**

Form A

Surface

**Machining**

rotated

**Ra (µm)**

min. 3,25 / max. 12,5

**Rz (µm)**

min. 12,5/ max. 50

created 12.05.2018 01:16

3/5

## Comparison of dimensions DIN 2576 and EN 1092-1

The following dimensions are identical:

- Outer diameter, [D]
- Circular hole pattern, [k]
- Number of drill holes, [Num]
- Hole diameter, [d2]

### deviations at a glance:

Dimension [b], Thickness of sheet

DN	DIN	EN
32	16	18 (PN 40)*
48	16	18 (PN 40)*
50	18	20 (PN 16)*
65	18	20 (PN 16)*
100	20	22 (PN 16)*
150	22	24 (PN 16)*
350	28	30
450	38	36
600	44	42
700	48	50

All dimensions in mm

(\*) = the EN refers to DN smaller than 200 on PN 16 and DN and smaller than 50 on PN 40)

Dimension [d6], Inner diameter

DN	DIN	EN
10	17,7	18,0
20	27,6	27,5
25	34,4	34,5
32	43,1	43,5
40	49,0	49,5
50	61,1	61,5
65	77,1	77,5
80	90,3	90,5
100	115,9	116,0
125	141,6	141,5
200	221,8	221,5
250	276,2	276,5
300	327,6	327,5
350	359,7	359,5
450	462,3	462,0
500	513,6	513,5

All dimensions in mm

Number of the drill holes

DN	DIN	EN
65	4	8

## Flange connection according to DIN 601

(fits a pair of flanges)

Consisting of hexagon head screws (number of corresponding flange drill holes)

4-6 Mu DIN 601 and a gasket EN 1514 DIN 2690 (for example Klingersil C-4400)

DN	DIN	EN
10	4	M 12 x 45
15	4	M 12 x 45
20	4	M 12 x 50
25	4	M 12 x 50
32	4	M 16 x 50
40	4	M 16 x 50
50	4	M 16 x 55
65	8	M 16 x 55
80	8	M 16 x 60
100	8	M 16 x 55
125	8	M 16 x 60
150	8	M 20 x 70
200	12	M 20 x 70
250	12	M 20 x 75
300	12	M 20 x 75
350	16	M 20 x 80
400	16	M 24 x 80
450	20	M 24 x 80
500	20	M 24 x 90
600	20	M 27 x 90