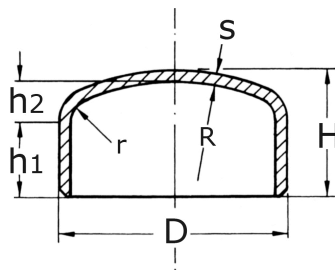


cap EN 10253

short name: KP*



technical product sheet

DN	D	s	h1	H	Art.-Nr.
25	33,7	2,0	31	38,0	KP-033-020
25	33,7	3,0	31	38,0	KP-033-030
32	42,4	2,0	29	38,0	KP-042-020
32	42,4	2,6	29	38,0	KP-042-026
32	42,4	3,0	29	38,0	KP-042-030
32	42,4	3,6	29	38,0	KP-042-036
40	48,3	1,6	27	38,0	KP-048-016
40	48,3	2,0	27	38,0	KP-048-020
40	48,3	2,6	27	38,0	KP-048-026
40	48,3	3,0	27	38,0	KP-048-030
40	48,3	3,2	27	38,0	KP-048-032
40	48,3	3,6	27	38,0	KP-048-036
50	60,3	1,6	24	38,0	KP-060-016
50	60,3	2,0	24	38,0	KP-060-020
50	60,3	2,9	24	38,0	KP-060-029
50	60,3	4,0	24	38,0	KP-060-040
65	76,1	1,6	20	38,0	KP-076-016
65	76,1	2,0	20	38,0	KP-076-020
65	76,1	2,6	20	38,0	KP-076-026
65	76,1	2,9	20	38,0	KP-076-029
80	88,9	2,0	30	51,0	KP-088-020
80	88,9	2,9	30	51,0	KP-088-029
80	88,9	3,2	30	51,0	KP-088-032
100	114,3	2,0	37	64,0	KP-114-020
100	114,3	2,6	37	64,0	KP-114-026
100	114,3	2,9	37	64,0	KP-114-029
100	114,3	3,0	37	64,0	KP-114-030
100	114,3	3,6	37	64,0	KP-114-036
125	139,7	2,0	42	76,0	KP-139-020
125	139,7	2,6	42	76,0	KP-139-026
125	139,7	3,2	42	76,0	KP-139-032
125	139,7	4,0	42	76,0	KP-139-040
150	168,3	2,0	48	89,0	KP-168-020
150	168,3	2,6	48	89,0	KP-168-026
150	168,3	3,2	48	89,0	KP-168-032
150	168,3	4,0	48	89,0	KP-168-040
150	168,3	4,5	48	89,0	KP-168-045

created 03.03.2018 00:19

1/3

DN	D	s	h1	H	Art.-Nr.
200	219,1	2,0	48	102,0	KP-219-020
200	219,1	2,6	48	102,0	KP-219-026
200	219,1	2,9	48	102,0	KP-219-029
200	219,1	3,6	48	102,0	KP-219-036
200	219,1	4,0	48	102,0	KP-219-040
250	273,0	2,0	60	127,0	KP-273-020
250	273,0	3,6	60	127,0	KP-273-036
250	273,0	4,0	60	127,0	KP-273-040
300	323,9	2,6	39	120,0	KP-323-026
300	323,9	3,0	39	120,0	KP-323-030
350	355,0	2,0	76	165,0	KP-355-020

available material: 1.4571

Butt welding fittings > caps and heads > cap EN 10253





Pipe Caps DEN 10253

Radii

$$R = 0.8 \times D$$

$$r = 0.154 \times D$$

Options

Machined edges to prepare for welding seam

Parts can be polished for higher requirements on the precision

Flares on ends

Laser cutting, for example to cut holes in ends (centered or off-center)

Certificate 3.2 with TÜV approval