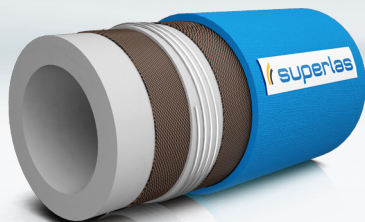


## FOOD IDAHO

Food S&D hose with UPE tube 16bar



### APPLICATION / USE

**Application** suction and delivery hose for transport of food, chemicals and pharmaceuticals

**Temperature** -35°C to +100°C

**Features** taste and odour free, easy to clean, smooth lining

### CONSTRUCTION

**Type** mandrel built

**Tube** UHMW-PE, white, smooth, food quality, resistant to wide range of chemicals

**Reinforcement** high tensile textile cord, steel helix, antistatic wire (not in picture)

**Cover** high temperature, weather ozone and abrasion resistant synthetic elastomer compound, blue, smooth with cloth impression

**Standard/Notice** conforming to FDA standards / for more information on sterilisation and cleaning please contact us, for information on chemical resistance charts check available chemical recommendations



CODE	ID <i>mm</i>	OD <i>mm</i>	WALL <i>mm</i>	WORKING PRESSURE <i>bar</i>	BURST PRESSURE <i>bar</i>	BENDING RADIUS <i>mm</i>	WEIGHT <i>kg / m</i>	MAX. LENGTH <i>m</i>
FSH048BUHW-13x6	13	25	6	16	48	52	0,54	40
FSH048BUHW-19x6	19	31	6	16	48	76	0,70	61
FSH048BUHW-25x6	25	37	6	16	48	100	0,87	61
FSH048BUHW-32x6	32	44	6	16	48	128	1,06	61
FSH048BUHW-38x7	38	52	7	16	48	152	1,38	61
FSH048BUHW-51x8	51	67	8	16	48	204	2,30	61
FSH048BUHW-63x8	63	79	8	16	48	252	2,65	61
FSH048BUHW-76x8	76	92	8	16	48	304	3,15	61



CODE	ID <i>mm</i>	OD <i>mm</i>	WALL <i>mm</i>	WORKING PRESSURE <i>bar</i>	BURST PRESSURE <i>bar</i>	BENDING RADIUS <i>mm</i>	WEIGHT <i>kg / m</i>	MAX. LENGTH <i>m</i>
FOH048BUHW-102x8	102	118	8	16	48	459	4,22	61
FSH048BUHW-127x10	127	147	10	16	48	572	6,70	40
FSH048BUHW-152x11,5	152	175	11,5	16	48	760	9,40	40

Other bore sizes and dimensions are available on request.

